



# SEASALT JOURNALS

A year in Cornwall



This season, we invite you to join us on a journey through Cornwall. With nature's steady rhythm as our guide, each collection will tell the story of a different landscape as it is touched by changing seasons.

Early in the year, the silvery light of winter's mist-topped mounts softens to reveal the whispered promise of spring. As the season warms up, carefree days lead us down hidden pathways to quiet coves where dune grass grows wild. By summertime, the soft sway of flower-filled meadows gives the air a sweet scent.

Throughout, new styles tell a story of Cornwall with colours and textures drawn from the land, sea and sky. In light, easy layers and lasting, quality fabrics, we capture the coastline's ever-changing constancy in styles that flow from winter to spring.







## MOORS & WOODS

### LAUNCH 1

In January, a haze of purple heather stretches across Cornwall's ancient moorlands. At the fringes of the heath, wild woodlands are a slumbering bouquet of life. Soon, birds will sing, bluebells will bloom and the scent of wild garlic will linger on a fresh spring breeze.

Inspired by the abundance that follows winter's last frost, we start the year with a palette of refreshing and optimistic spring colour. Dappled shade and budding leaves influence natural textures while rolling moorland informs confident yarn-dyes and knit patterns that speak to a sense of freedom and adventure.



**Clover Bed Jumper**  
croquet island multi • QC 174

**Barnes Crops**  
light wash rain slub • QC 153





Toni wears left:  
**Coombe Lane Jacket**  
island • QC 160

**Copseland T-shirt**  
mini cornish island chalk • QC 159

**Issey Trousers**  
maritime • QC 194

Lidia wears above:  
**Brouse Dress**  
cyclamen island • QC 156

**Boscastle Mac**  
maritime • QC 140

**Breany Cross-body Bag**  
maritime • QC 607





**Tepel Vest**  
maritime • QC 130

**Reading Rocks Jacket**  
mid indigo wash • QC 182

**Allantide Skirt**  
francis collage blue jay • QC 184







Toni wears left:  
**Last Leaf Top**  
fresh blooms blue fog • QC 161  
**Carvannel Trousers**  
ecru • QC 162



Lidia wears above:  
**Line Strokes Dress**  
woodland carpet maritime • QC 200  
**Nancothan Jacket**  
chalk • QC 155



**Boscastle Mac**  
dark dijon • QC 163

**Cloud Chasing Jumper**  
clear sky • QC 183

**Spiral Flight Shirt**  
cornflower blue fog • QC 172

**Dusk Journey Skirt**  
mid wash tide • QC 103







Toni wears above:  
**Riding High Top**  
clover buddleia • QC 102  
**Makers Jumper**  
kelp • QC 101  
**Waterdance Trousers**  
dark indigo wash • QC 123

Toni wears right:  
**Brouse Dress**  
clover laurel • QC 120  
**Dawson Pick Cardigan**  
buddleia • QC 109





"I used ombré tones to bring the texture and colour of Cornwall's moorlands into Fair Isle knits."

Carina, Knitwear Designer

Toni wears left:  
**Lamorna Lane Cardigan**  
hemmick aran multi • QC 125

**Highmore Jeans**  
mid wash tide • QC 111

Lidia wears above:  
**Maggie Dress**  
floral moor maritime • QC 144

**Reading Rocks Jacket**  
mid indigo wash • QC 182





**Far Horizon Jacket**  
laurel • QC 121

**Cloud Chasing Jumper**  
crocus • QC 105

**Barnes Crops**  
ecru twill slub • QC 106



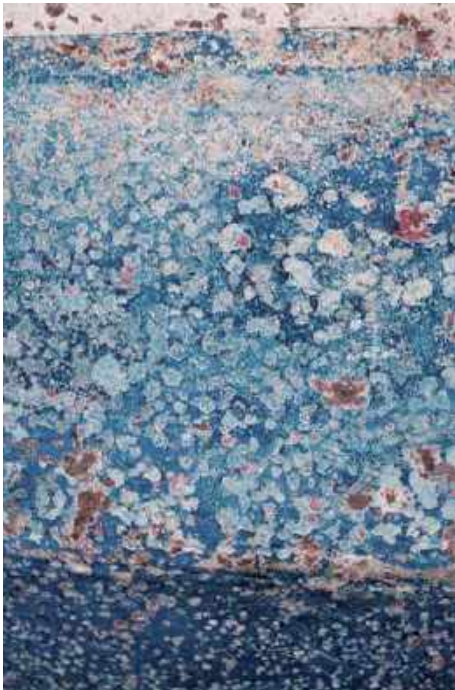
Toni wears:  
**Berlewen Jumper**  
croquet aran multi • QC 141

**Dayby Trousers**  
buddleia • QC 142

**Kevern Cross-body Bag**  
maritime • QC 615

Lidia above wears right:  
**Summer Scarf**  
floral terrain chalk • QC 660





## MARSHES & MOUNTS

### LAUNCH 2

If you climb Sancreed Beacon on a clear day, you can see right across Mount's Bay to the Lizard Coast. Go at dawn, and a rising sun will turn the landscape from grey to gold, illuminating Marazion's life-rich marshes and St Michael's Mount in the sparkling sea beyond.

Waves of marshland grass give form to rippled knits that complement classic shapes and simple, utilitarian styling. They're textured with stitched patterns and geometric details that reflect the tapestry of landscape surrounding the marshes, ready to be layered for boardwalk strolls through the reeds.



**Pellar Dress**  
marsh marigold chalk • QC 235

**Forest Ridge Cardigan**  
tomato • QC 212





Lidia above wears:  
**Brouse Dress**  
painted marsh maritime • QC 227  
**Carwinion Cross-body Bag**  
deep copper • QC 618



Toni right wears:  
**Far Horizon Jacket**  
laurel • QC 121  
**Smallcombe Vest**  
chalk • QC 192  
**Barnes Crops**  
light wash rain slub • QC 153  
**Pretty Circle Scarf**  
painted marsh chalk • QC 667



**Cloudburst Mac**  
tomato • QC 558

**Nancothan Jacket**  
chalk • QC 155

**Little Grebe Vest**  
paving path seaway multi • QC 213

**Barnes Crops**  
ecru twill slub • QC 106





Lidia wears left:  
**Larissa Shirt**  
circle marking chalk • QC 221  
**Carvannel Trousers**  
ecru • QC 162  
Lidia wears right:  
**Makers Jumper**  
wreckage • QC 220





Lidia wears left:  
**Hope Cottage Blouse**  
dandelion seed rosemary • QC 234

**Makers Jumper**  
kelp • QC 101

**Carvannel Trousers**  
ecru • QC 162



Toni wears right:  
 **$\frac{3}{4}$  Secret Cove Dress**  
dandelion seed seaway • QC 230







## COAST PATHS & CORNISH LANES

---

### LAUNCH 3

Spring arrives early in Cornwall, carried in on the gulf stream. The promise of warmer days is welcomed with a symphony of birdsong and blossom. Along the coast, narrow footpaths wind between a confetti of fresh wildflower blooms.

On bright spring mornings, this celebratory spirit inspires us to turn from cosy textures to light, breezy layers. Simple, easy-fitting silhouettes give airy movement to fresh floral prints, and versatile denim is reimagined in the blues of a hazy mackerel sky.



**Blue Hills Border Dress**  
flowering blooms chalk • QC 282



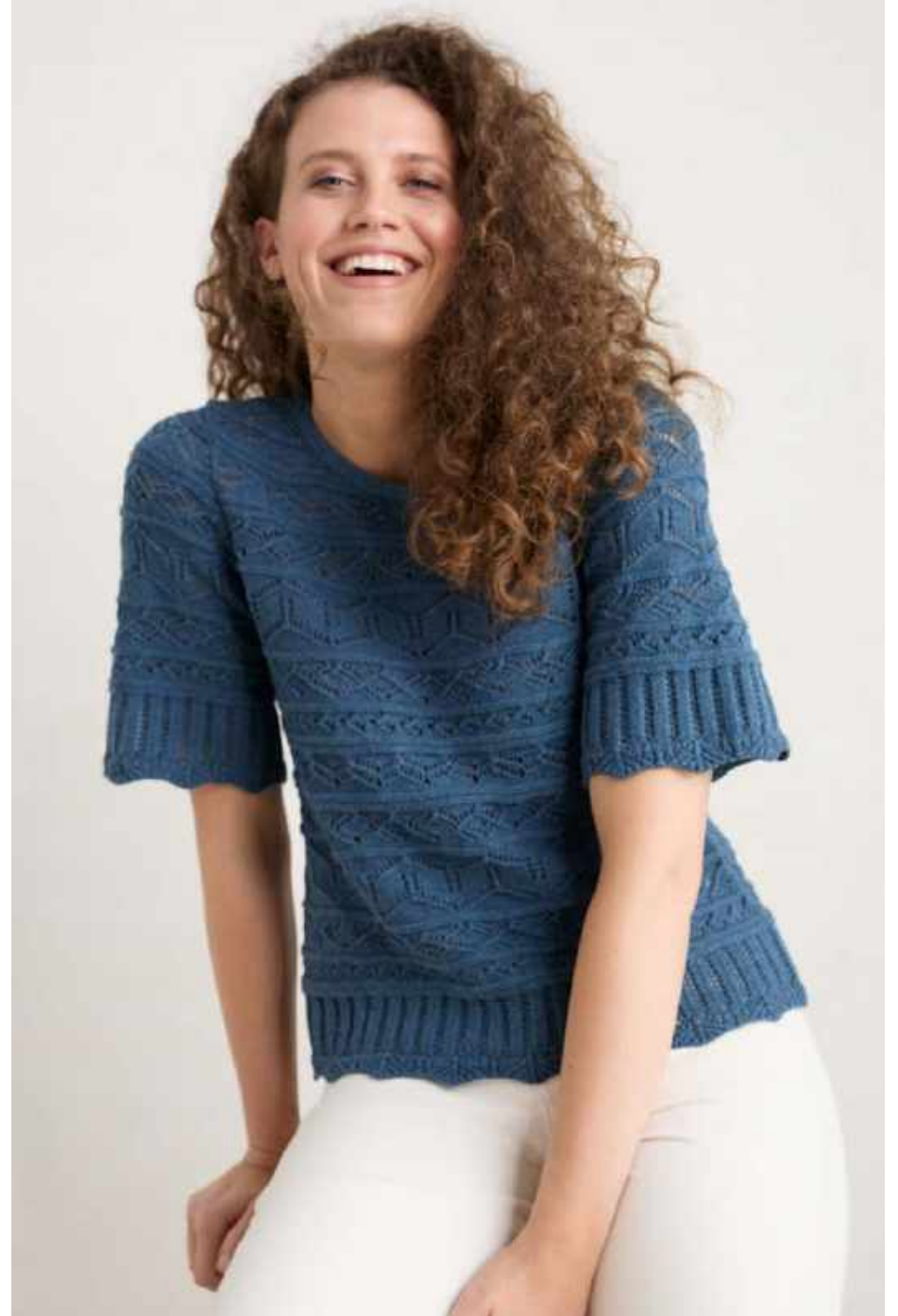


Toni wears:  
**Celia Hat**  
anemone vintage chalk • QC 732  
**Wild Fennel Top**  
light squid • QC 297  
**Dipping Sun Trousers**  
light squid • QC 296  
**Summer Scarf**  
flowering border chalk • QC 740  
**Singing Water Bag**  
flowering blooms chalk • QC 604  
**Dragonfly Tunic**  
flowering blooms chalk • QC 294





Toni wears above:  
**Marsh Violet Dress**  
campion field dill • QC 268  
**Sculpture Garden Hat**  
light natural • QC 730



Toni wears right:  
**River Cross Jumper**  
light squid • QC 241  
**Barnes Crops**  
ecru twill slub • QC 106





Lidia wears left:  
**Grass Wave Dress**  
cassis • QC 320

Lidia wears right:  
**Larissa Shirt**  
lino foxglove chalk • QC 311

**Whirler Shorts**  
mid wash cross hatch • QC 304

**Doe Path Vest**  
cordial • QC 312

**Arame Jacket**  
maritime • QC 301

**Barnes Crops**  
ecru twill slub • QC 106







**Birch Leaf Dress**  
coastal bloom chalk • QC 244





**Beach Road Shirt**  
fern moss • QC 330

**Poleacre Crops**  
fern moss • QC 302

**Chateaux Dress**  
lino foxglove marine • 315





## CREEKS & WATERWAYS

---

### LAUNCH 4

In April, the quiet banks of Cornwall's Helford River are warmed by spring sunshine. On the water, wooden boats sway in a gentle breeze. Painted in shades of maritime blue and rudder red, they're anchored in the shallows where seaweed swirls between riverbank rocks.

This peaceful scene inspires easy silhouettes finished with timeless details. Nautical stripes pair with loose linen trousers for relaxed afternoons, and versatile layers are ready for the year's first alfresco evenings as dusk paints the creek in soothing pastel hues.



**Castle Beach Cardigan**  
porthole maritime chalk • QC 387

**Canary Vest**  
vener chalk maritime • QC 386

**Penderleith Shorts**  
maritime • QC 279





**Little Grebe Vest**  
seaglass sailboats multi • QC 371

**Tideline Sweatshirt**  
amaranthe chalk rudder • QC 373

**Tide Flow Trousers**  
chalk • QC 372







**Arame Jacket**  
rudder • QC 375

**Copseland T-shirt**  
tri pellitras chalk relish • QC 393

**Rosewell Farm Skirt**  
rudder • QC 388



**Charlotte Dress**  
waterway floral chalk • QC 374





**Knavock Jumper**  
mini cornish helford multi • QC 360

**Whirler Shorts**  
mid wash cross hatch • 304

Lidia wears right:  
**Sweet Day Cardigan**  
ecru • QC 246

**Belle Dress**  
driftwood marks chalk • QC 362



**Arame Jacket**  
clover • QC 357

**Bassett Wood Dress**  
laburnum helford • QC 342







**Arame Jacket**  
clover • QC 357

**Bassett Wood Dress**  
laburnum helford • QC 342

**Castle Point Hat**  
dark lichen • QC 731



**Draw Kiln Dress**

dark wreckage • QC 352

**Summer Scarf**

kelp forest chalk • QC 750







## SECRET BEACHES & HIDDEN BAYS

---

### LAUNCH 5

Glimpsed from the cliffs above, Cornwall's secluded bays beckon in the warm light of a summer evening. This golden hour glow casts long shadows across rippled sand, reaching out to the ocean where the sea glitters in the setting sun.

On these long, slow evenings, we turn to relaxed linen layers and soft cotton knits. The salty breeze gives simple silhouettes an easy movement, and contemporary coastal neutrals lend beachside dressing a refined elegance.



**Sea Drift Dress**  
pocket shells inkwell • QC 435





Toni wears left:  
**Draw Kiln Dress**  
chalk • QC 415

**Sculpture Garden Hat**  
light natural • QC 730

Toni wears above:  
**Larissa Shirt**  
pocket shells chalk • QC 442

**Sleeveless Grass Wave Dress**  
pool • QC 420



**Wild Plain Vest**  
bird egg • QC 411

**Peaceful Haven Culottes**  
sea frond chalk • QC 412

**Colour Study Top**  
sea frond chalk • QC 413

**Stannary Shorts**  
dark balsam • QC 414



**Colour Study Top**  
sea frond chalk • QC 413

**Peaceful Haven Culottes**  
sea frond chalk • QC 412



**Summer Soul Dress**  
Linework floral basket • QC 433



**Gwynver Jumper**  
mini cornish pool mix • QC 403

**Sea Heart Culottes**  
basket • QC 404



## MEADOWS & PASTURES

---

### LAUNCH 6

In the height of summer, Cornwall's meadows and pastures fill with the sweet scent of wildflowers. Paper-petalled poppies and clusters of blue cornflowers peer between swathes of sun-baked grasses.

In these golden moments, a warm breeze catches fluid silhouettes and relaxed, airy dresses. Effortless styles are rendered in vibrant shades and fresh hand-drawn florals, designed to capture the joy and colour of halcyon summer days.





**Deep Water Dress**  
folky poppy inkwell • QC 462



**Wheatear Top**  
chalk • QC 455

**Whirler Shorts**  
mid wash cross hatch • QC 304

Toni wears right:  
**Wheatear Top**  
chalk • QC 455

**Through The Woods Skirt**  
chalk • QC 454







**Sleeveless Meadowsweet Dress**  
meadow border tomato • QC 465



**Belle Dress**  
quilt star chalk • QC 457

**Singing Water Bag**  
watercress • QC 605





Toni wears above:

**Binnacle Vest**

lupin • QC 490

**Misty Day Skirt**

lupin • QC 491

Lidia wears right:

**Sky Beyond Dress**

agapanthus lino chalk • QC 483



**Mistborne Packable Coat**

laurel • QC 569

**Reading Rocks Jacket**

mid wash indigo • QC 182

**Copseland T-shirt**

mini cornish island chalk • QC 159

**Highmore Jeans**

mid wash tide • QC 111



SEASALT  
RAIN®



WATERPROOF  
AND WINDPROOF



BREATHABLE  
FABRIC



FULLY  
TAPED SEAMS



FC  
FREE  
FLUOROCARBON  
FREE





Lidia wears left:  
**Blue Depth Jacket**  
cassis • QC 549

**Nancothan Jacket**  
chalk • QC 155

**Barnes Crops**  
ecru twill slub • QC 106

**Daytripper Backpack**  
maritime • QC 621

Toni wears right:  
**Waterway Jacket**  
driftwood • QC 567

**Tideline Sweatshirt**  
maritime • QC 164

**Dayby Trousers**  
buddleia • QC 142





Lidia wears:  
**Penweathers Trench Coat**  
light nori • QC 561  
**Sailmaker Shirt**  
mid wash sand • QC 175  
**Carvannel Trousers**  
ecru • QC 162



**Penweathers Trench Coat**  
driftwood • QC 562  
**Brouse Dress**  
clover laurel • QC 120







**Fulmar Coat**  
sunglow • QC 564

**Seabird Jumper**  
maritime • QC 113

**Kevern Cross-body Bag**  
maritime • QC 615

**Carvannel Trousers**  
ecru • QC 162



**WHOLESALE CUSTOMER SERVICE**

T: +44 (0)1326 640377

E: [wholesale@seasaltcornwall.co.uk](mailto:wholesale@seasaltcornwall.co.uk)

**PRESS ENQUIRIES**

T: +44 (0)20 7729 8886

E: [info@b2bmedialtd.com](mailto:info@b2bmedialtd.com)

**SEASALTCORNWALL.COM**